



MasterX™ 802 Series

POWERED BY VOYANCE®

The MasterX™ newest line of DR systems are the most versatile on the market today, powered by our industry-leading Voyance® Acquisition Software. MasterX DR systems are known for having lightweight designs, and long-lasting battery power with high image quality; all powered by Voyance Software. The MasterX 800 Series is packed with many industry-leading features and made from the highest quality components on the market today.



MasterX™ 802 Series Features

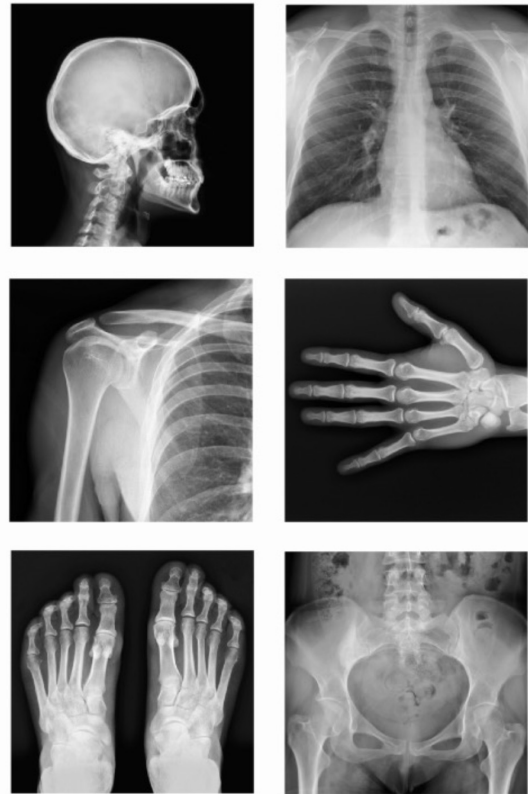
Since our detector has built in sensors including temperature and gravity, which are constantly monitoring even during panel in powered off state to make sure the panel is functioning properly and user can operate safely.

Main features

- Ultra low dose
- Self management and monitoring



- Complete diagnostic system
- Easy cleaning (IPX6-rated for water resistance)



Voyance®

An industry leading complete software suite that delivers a secure and cost-effective way to acquire, view and share DICOM Images. Voyance® is one of the easiest, most user friendly interfaces. Its modern design & attention to the user experience along with its and features & functions make it a great tool to every user.

Specifications

MasterX™ 802C

Glassless 14" x 17" Wireless & Tethered CsI FPD | Powered by Voyance®

Specification	802 C
Outline dimensions (ISO4090)	14" x 17" 383 x 460 x 15 mm
Sensor array	A-Si photodiode
Scintillator	CsI
Resolution	2,500 x 3,063
Pixel Size	140 µm
Grayscale	16 bit
Wifi	802.11ac / 2 antennas / 2s scan display / AP mode
Drop height	70 cm
Housing material	Mg-Al alloy
Weight	2.5 kg
Waterproof	IPX6
Durability (Face load / Point load)	300 / 120 kg
Battery autonomy	8 hours*
Trigger mode	AED mode
Log file	Log file, sensor data and other calibration data are available
Accessories	Battery/ Magnetic connector cable with ethernet and power
Operation temperature / Humidity	10~ 35 °C / 15~ 80%

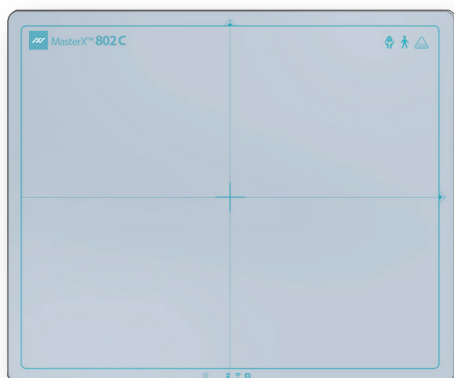


Specifications

MasterX™ 802G

Glassless 14" x 17" Wireless & Tethered GOS FPD | Powered by Voyance®

Specification	802 G
Outline dimensions (ISO4090)	14" x 17" 383 x 460 x 15 mm
Sensor array	A-Si photodiode
Scintillator	GOS
Resolution	2,500 x 3,063
Pixel Size	140 µm
Grayscale	16 bit
Wifi	802.11ac / 2 antennas / 2s scan display / AP mode
Drop height	70 cm
Housing material	Mg-Al alloy
Weight	2.3 kg
Waterproof	IPX6
Durability (Face load / Point load)	300 / 120 kg
Battery autonomy	8 hours*
Trigger mode	AED mode
Log file	Log file, sensor data and other calibration data are available
Accessories	Battery/ Magnetic connector cable with ethernet and power
Operation temperature / Humidity	10~ 35 °C / 15~ 80%





MEDICATECH USA®



T. +1 800-817-5030

T. +1 949-679-2881

F. +1 949-679-2882



www.medicattechusa.com



info@medicattechusa.com